

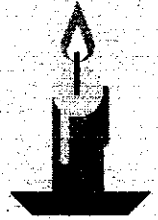


Alabama-West Florida Conference United Methodist Women



**2010 Spiritual Enrichment Retreat
March 26-28, 2010
Blue Lake Assembly**

"This Little Light of Mine"



Final Registration Deadline is **March 12, 2010**

Check-in begins Friday, March 26, 2010 at 4:00 p.m. Dinner at 6:00 p.m.

Registration and Health form enclosed (please complete **both** sides)



Guest Speaker

Garlinda Burton

Ms. M. Garlinda Burton is General Secretary of COSROW—the General Commission on the Status and Role of Women in the United Methodist Church. She is a versatile and sought-after speaker. She received the 1995 "Outstanding Communicator of the Year" Award from the United Methodist Association of Communicators. Ms. Burton is a specialist in racial and gender issues and often conducts training sessions in this area. She has been the editor of *Interpreter*, a magazine for laypeople and pastors in local United Methodist Churches. She also served as director for the United Methodist News Service and editorial director for Korean and Spanish language magazines in addition to doing free lance writing and editing for publications such as *Response* and *New World Outlook*.

Ms. Burton has traveled through Africa, Latin America and Europe to cover such issues as the anti-apartheid movement in South Africa, the establishment of the first private, four-year university in Zimbabwe, and the economic empowerment of Nicaragua's poor. As a part of the Lilly Foundation Study, she published a paper on Methodism and American culture reflecting the influence of the church on U.S. society. Ms. Burton also published a booklet on "body image" for teens and contributed to a book of meditations for mothers and step-moms.

A native of Durham, NC, she earned a bachelor's degree in journalism from the University of Texas and a master's degree from Northwestern University with additional graduate work in Spanish at Pueblo, Mexico, through Wichita State University.

She is a member of the Hobson UMC in Nashville, Tennessee, and interracial fellowship, where she chairs the communications committee and directs a choir for teen-age girls.

**Mission Team
2010**

Beth Bowdin
President

Nancy May
Vice President

Mary Jo Morton
Secretary

Margie Outlaw
Treasurer

Beth Henson
Communications
Coordinator

Ruth Ann Powers
Program Resources

Pat Dodge
Chair, Nominations

Virginia Lindley
Blue Lake

**Mission
Coordinators**

Martha Spiva
Spiritual Growth

Edna Williams
Social Action

Georgette Griffin
Membership
Nurture & Outreach

Betty Helms
Education &
Interpretation

Martha Rovira
Language
Coordinator

Dr. Paul Leeland
Bishop

Elizabeth Andrews
Dean of School of
Missions

Charlotte Hobson
Registrar

Lynn Hamric
Women's Division
Director




From the desk of the President...

HAPPY NEW YEAR! This year is full of possibilities and opportunities! Take the time now to mark your calendar so that you will not let dates slip up on you or you plan something else before you realize that there is something happening with United Methodist Women.

February 26-27, Tapestry Retreat, "*Weaving the Threads of GRACE Through Our Lives*" Pensacola, FL
March 26-28, Spiritual Enrichment Retreat, "*This Little Light of Mine*", Blue Lake
April 30-May 2, Assembly, "*Faith Hope, Love In Action*", St. Louis, MO
July 23-24, Cooperative School of Christian Mission, "*Faith, Hope, Love In Action*", Blue Lake
October 22, Officer Up-date, Blue Lake
October 23, Annual Day, Bishop Paul Leeland, keynote speaker, Blue lake

This is just the Conference events. Add your District and Local events and plan to be as involved as humanly possible. I have found that the more I participate in United Methodist Women events, the more I learn and appreciate the DIFFERENCE we make in the lives of women, children and youth all over the world. I challenge you to make United Methodist Women a top priority in 2010!

This is a time of change, an exciting time for United Methodist Women! As Harriett Olson, Deputy General Secretary Women's Division said, "United Methodist Women continue to change and grow to serve the church and the world". I was privileged to attend Women's Division fall Board Meeting. At the meeting, Women's Division Board of Directors approved a recommendation for reconfiguration of relationships with the General Board of Global Ministries. This will give direct oversight of United Methodist Women supported mission and strengthen connections between local women and mission partners. It will be easier to follow where our mission \$'s go. As exact details are worked out, they will be passed on.

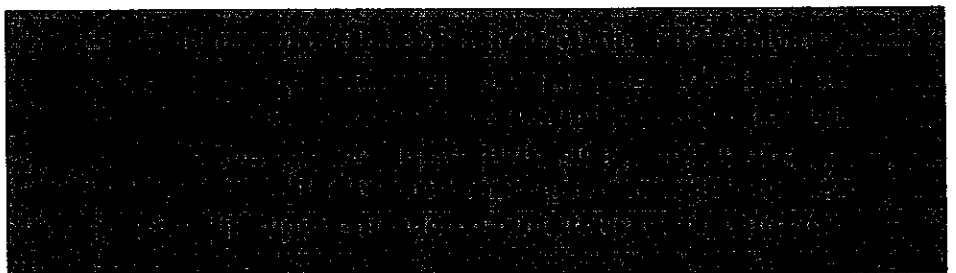
Last year, I asked that we focus on being "SPARKS" to get mission action moving forward. This year, I'd like for us to be "FLAMES"  on fire for maintaining and spreading mission especially to women, children and youth,

throughout the world. We have a heritage of seeing a need and providing a means of meeting the need. Our reports at Annual Day of work done in 2009 showed that we are continuing that heritage. There is still much to be done and if United Methodist Women do not do it...who will?

FAN THE FLAME, ENERGIZE THE FIRE OF MISSION WITH WOMEN, CHILDREND AND YOUTH!

Sisters together in Mission,

Beth Bowdin, President
 (334) 898-7676
 bbowdin@entercomp.com



Spiritual Growth

What an awesome legacy we have inherited from the United Methodist Women and their predecessor organizations. They have been at the forefront in advocating for and serving the needs of women, children and youth for the past 140 years. After attending the Leadership Training Event in St. Louis for new Conference officers, I was inspired to contribute my energies and specific abilities in this vital work. I was also challenged to encourage diversity in our membership. UMW members should continue this legacy by making and telling their own mission stories in our country and around the world. We have an outstanding Conference Mission Team available to assist local units and districts in this task. There are many opportunities for service and for spiritual growth activities. Please take advantage of them. Be sure to mark your calendar for the **Spiritual Enrichment Retreat on March 26-28 at Blue Lake**. The theme is *"This Little Light of Mine"*. We are very fortunate to have as our speaker Ms. Garlinda Burton, the General Secretary for the Commission on the Status and Role of Women. She has an extensive and impressive background as a journalist, editor, advocate and motivational speaker. The song leader will be Cheryl Mothershed accompanied by Charlene Moser. This should be a challenging time of spiritual renewal and re-dedication to the work God has given us in using our individual talents. Collectively as a community of UMW women, our lights will shine brighter. Invite others to come who have not attended before to participate in this memorable experience. The application form is enclosed. **PLEASE NOTE THAT THE REGISTRATION IS TO BE SENT TO CHARLOTTE HOBSON AND NOT TO BLUE LAKE.**

I am honored and humbled to serve in this position. My selected verse this year is from Proverbs 3:5 *"Trust in the Lord with all your heart" followed by His promise, "In all your ways acknowledge Him, and He will direct your path."* I look forward to our spiritual journey together and ask for your prayers and support.

Martha Spiva
mespiva@bellsouth.net

Nominations

Happy New Year from the Nominations Committee!

Once again we are at the beginning of a new year, complete with challenges as well as blessings. We celebrated new leaders who were added to the Conference Mission Team back in October on Annual Day. This year we will be looking for additional leaders to fill out the slate for 2011. Are you willing to be a leader? Like the Marines who are always looking for a "FEW Good Men", we are looking for a "FEW Good UMW Women"! Although our mission is not the same, we need good, willing leaders. If you are interested in serving 2011 or the following years, please take time to fill out a Talent Bank Form and give it to a Nominations Committee member or send to me.

Having been elected on Annual Day, 2009, I am your new Nominations Chair. I am a Pensacola native, and returned to my roots in 2002 after living in many other places for 30 years. I retired from Zurich Insurance in 2008 and began my quest to find a place to serve others. UMW was a group I was destined to join, due to my Methodist heritage. The Nominations Committee members and I offer our assistance to you in your District or Local units.

Peace be with you,

Pat Dodge
Nominations Chair
(850)857-4705
pfdodge@live.com

Communications Corner

Are you receiving the Alert by mail? If not, please complete the last page of the Alert and mail to me. I will include your name in the database and you will receive the Alert. Sure, I can't be certain being organized by the upcoming events, but the yearbook and the 2011 Conference has planned for you.

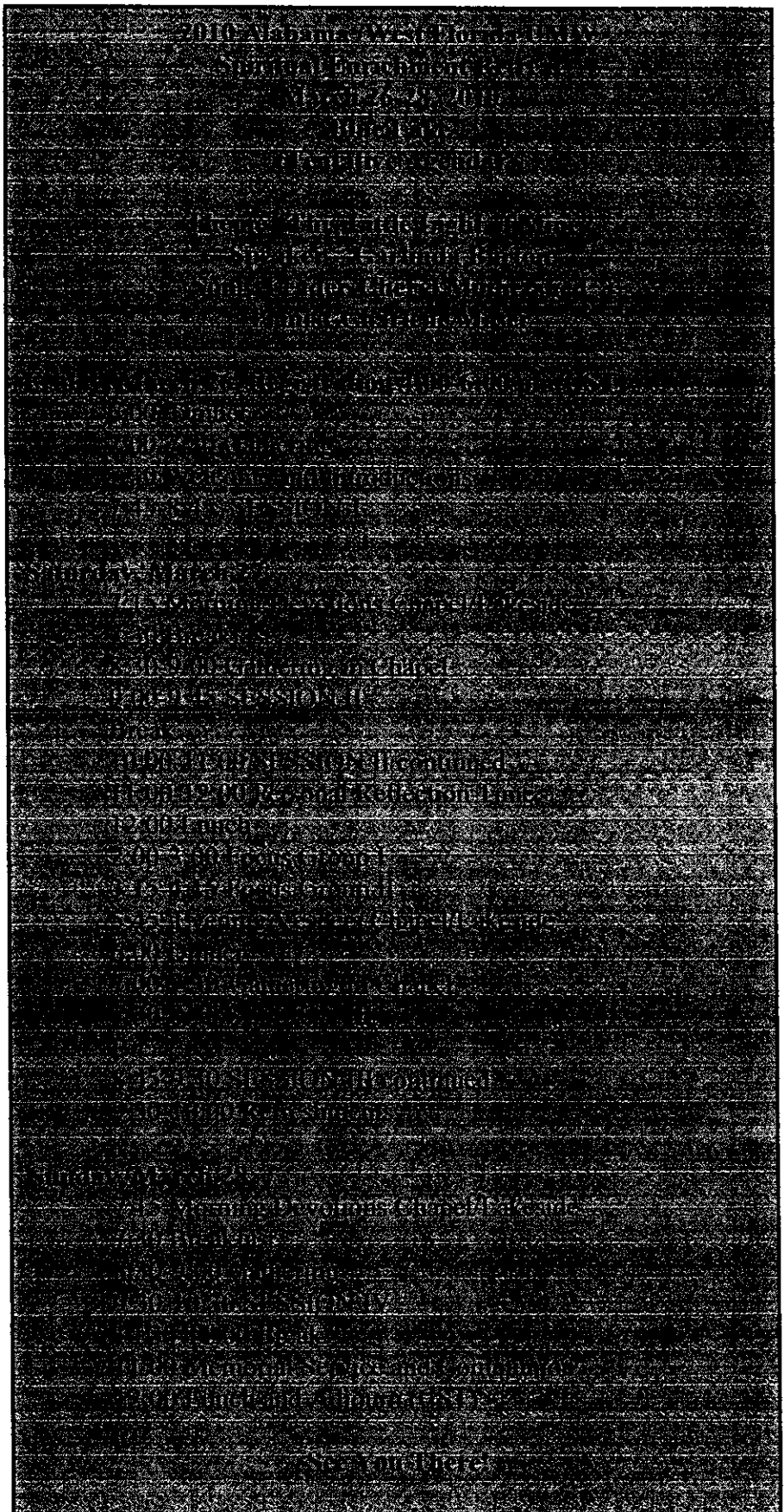
Beth Hanson
Alert Editor



Important Dates to Remember

2010

- **Jan 8-9, 2010**
Executive Committee
& Nominations Mtg
Blue Lake
- **Jan 22-23, 2010**
COSROW Retreat
"Growing Toward Shalom"
Blue Lake
- **February 26-27, 2010**
A Conference for All Women
"Tapestry: Weaving the
Threads of Grace Through
Our Lives"
First UMC Pensacola, FL
- **Mar 26-28, 2010**
Spiritual Enrichment Retreat
"This Little Light of Mine"
Blue Lake
- **April 30-May 2, 2010**
UMW General Assembly
"Faith-Hope-Love in Action"
St. Louis, MO
- **June 24-27, 2010**
South Atlantic Regional School
of Christian Mission
Ferrum College, VA
- **July 9-10, 2010**
Executive Committee
& Nominations Meeting
Blue Lake
- **July 23-24, 2010**
Cooperative School of
Christian Mission
Blue Lake
- **October 2, 2010**
Executive Committee
& Nominations Meeting
Blue Lake
- **October 22-23, 2010**
District Officer Updates
Conference Annual Meeting
Blue Lake



SCHOOL OF CHRISTIAN MISSION SETS DATE

Mark your calendar for the 2010 Cooperative School of Christian Mission. There will be a two day school Friday and Saturday, July 23 and 24, with one of four studies offered. The studies include Spiritual Growth, "For the Love of God: John's Letters"; General Study, "Joy to the World: Mission in the Age of Global Christianity"; Geographic Study, "The Beauty and Courage of Sudan: Why a Dream of Peace is Possible", and the Children's Study, "Teaching Mission to Children."

We will be trying a new feature this year. Participants will have a choice of registering for just the two day study with one course or registering for three days, July 22, 23 and 24 and completing two courses. Persons participating in the three day session would take the Spiritual Growth study on July 22 and would be able to choose one of the other three studies on July 23 and 24. The Spiritual Growth Study will be offered two times – at the one day session on July 22 and at the two day session on July 23 and 24, so regardless of whether you attend the two or the three day, you will be able to take the Spiritual Growth study.

No one will be able to register for just the one day session. In order to be a Certified School, each course must be eight hours and we must include plenaries and worship opportunities. The one day study will only offer that one study so cannot be offered as a stand-alone event. We know that this new schedule change is a little confusing so if you have questions, please feel free to call or email Dean Elizabeth Andrews at 850-485-5397 or elizand01@aol.com or speak with any member of the School Planning Team. We look forward to seeing you at School of Missions!

Elizabeth Andrews, Dean
Cooperative School of Christian Missions

Please come with faith, hope, and love in action
to Assembly 2010 in St. Louis!



April 30-May 2, 2010

United Methodist Women assemble every four years to celebrate, to lift up, to learn, and to return to their communities better equipped for mission. Tens of thousands of women have been meeting in this fashion since 1942 in a unified effort to stay at the forefront of the work being done both locally and globally, both systemically and in charity, to improve and sustain the lives of women, children and youth.

Assembly 2010 has been themed: "*Faith-Hope-Love in Action*." Chosen because it encapsulates the 140 year history of United Methodist Women, it says everything about what is happening on the ground today, and is the momentum for decades to come. "*Faith-Hope-Love in Action*" is the energy that moves through each woman that has pledged her time for service through United Methodist Women.

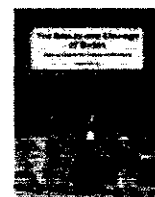
More information regarding Assembly workshops, exhibits, speakers and programs go to www.umwmission.org

General Information

In May, St. Louis usually has mildly warm weather, so please dress appropriately. Remember to wear comfortable walking shoes for exploring the exciting Experience Hall, Mission Resource Center's many resources and the St. Louis area. Every effort is made to reduce long waiting periods, but with so many United Methodist Women in one place, lines are unavoidable. Please use this time for fellowship and reunion with your neighbors.



Alabama-West Florida Conference
Cooperative School of Christian Mission
July 23-24, 2010
Blue Lake



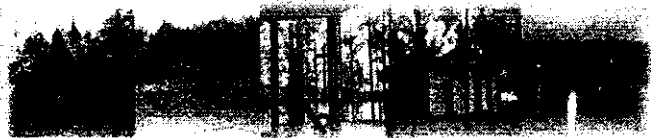
General Issue: Mission/Evangelism
Geographic: Sudan
Spiritual Growth: For the Love of God: John's Letters

Blue Lake

Many changes have taken place at Blue Lake this past year. Rev. Keron Vickers retired as director. The United Methodist Women's 2008 Annual Day was dedicated to Rev. Vickers. At Rev. Vickers retirement party, the Board of Trustees named the gym the M.K. Vickers gym. Also, our long-time friend and dietician, Jean Bowen resigned. Phyllis Murray became the new director at Blue Lake in May 2009. Phyllis and the Board have instigated many new improvements. Many new programs are beginning at Blue Lake - one - "Cookin at Blue Lake" got off to a good start on August 25. A substantial growth in the number of campers was reported for the summer camping season, a trend not seen in other camps. New cabins have been built and improvements have been made in existing cabins. New signage has been installed. Plans are underway for Blue Lake Day on October 3. The Capital Funds Campaign continues to show growth under the leadership of Scott Gilpin and Rev. Gorman Houston. Website updates are being planned. Renovation plans for the Chapel are being studied. Financial records are being updated. The Board of Trustees continues to evaluate its plans and purposes and visions for Blue Lake. The United Methodist Women are always recognized for their continued support by the Blue Lake staff, management, and Board of Trustees.

May God continue to bless us in His service.

Virginia Lindley
Blue Lake Representative
(850) 235-7879
vlindley@bellsouth.net



From the Vice President.....

Friends,

I hope you all had a Merry Christmas and a Happy New Year! I also wish you are ready for a great new year with United Methodist Women. We are going to have some changes and hope you all are ready for some interesting events.

The first event will be in the Pensacola District "Tapestry Weaving The Threads of GRACE Through Our Lives" in February 26-27, 2010. Please make an effort to come to all events possible. We want you to enjoy being a United Methodist Women and to invite others to come and join us. We, the Conference Team, are here to help serve and meet the needs of you and the PURPOSE! We need you to also to help meet the needs of the PURPOSE by participation and enthusiasm.

In His Service,

Nancy May
Vice President

Stir Into Flame
The Gift of God
Which Is Within
You. II Timothy 1:6a

COSROW Retreat

Alabama-West Florida Conference Retreat
January 22-23, 2010
Theme: "Growing Toward Shalom"
Leader: Rev. Millie L. Kim
Pastor, Bascomb United Methodist Church
Woodstock, Georgia

Registration online
<http://www.gbgm-umc.org/awfconfumw/>



Tapestry...

Weaving the Threads of GRACE Through Our Lives

February 26-27, 2010
 First UMC
 Pensacola, FL

Sponsored by
 Alabama/West Florida
 Conference of UMW

Featuring Rev. Dr. Connie Shelton



Reservation form online at
<http://www.gbgm-umc.org/awfconfumw/>

My Dear Sisters in Christ,

Firstly, HAPPY 2010 to all! I want to express my gratitude for your generous, missional heart for Hispanic-Latino Ministries. Your giving for 2009 totaled \$4,399.22. Thank you, thank you, thank you. Your dollars contributed to fuel:

- a) Seminars/workshops for leadership formation.
- b) Purchase of Rosetta Stone licenses (software) for the teaching of English as a Second Language via computer labs.
- c) Education Workshops on Immigration and Health Care with UMW groups/units.

We're living & putting into action our *UMC Social Principles* with your invaluable contributions/giving and unconditional LOVE & support for this essential ministry in our AWF Conference. I look forward to an abundant 2010, abundant in love, peace, compassion, awareness, and ministry opportunities.

Martha Rovira
 AWF Coordinator of Hispanic-Latino Ministries
 (251) 975-7575

From the Secretary....



The UMW Women's Division Board approved restructure for UMW at their October meeting. Our President, Beth Bowdin, was there and I am sure that she will be sharing what she learned beginning at our January Mission Team Meeting. The Vision that they adopted is "Turning faith, hope, and love into action on behalf of women, children and youth around the world." There are five expected outcomes that we will all learn more about during 2010.

It would be wonderful if this vision could lead to an increase in our membership so that we can do even more good work than we are doing right now. That would be the greatest gift that we could give to UMW.

Mary Jo Morton
 (850) 482-3688
mjmorton@embarqmail.com

United Methodist Women Take Action on Health Care Reform

Health reform is one of the most highly debated topics of our day. The adoption of health reform legislation will present a unique opportunity to improve the health of our nation. At the October 2009 Women's Division Board of Directors meeting, a policy statement on health reform was endorsed. This policy calls for United Methodist Women to enter into the public dialogue on health care reform and to monitor its concerns specific to women and children. As women of faith, we are encouraged to use our resources as part of an effort to raise the visibility and voices of people of faith who care about health care reform in the United States.

United Methodist Women
 Support Health Care for All

**Fourth Quarterly Report
December 23, 2009
UMW MISSION GIVING**

Pledge to Mission	\$38,644.02
Special Mission Recognition	1,120.00
Gift to Mission	1,806.50
Gift in Memory	1,485.00
World Thank Offering	8,960.95
A Call to Prayer and Self Denial	1,098.66
A Brighter Future for Children and Youth	585.00
Scarritt-Bennett Center	131.00
Crusade Scholarships	25.00
Magazine Fund	10.00
Assembly Offering	15.00
UMGOR	455.00
Dumas Wesley	785.75
Nellie Burge	785.76
Noah's Ark	785.75
S.K.I.P.	755.76
Mobile Inner City	785.75
Hispanic Ministries	785.76
Assembly/Jurisdiction Love Offering	261.43
Blue Lake	2,697.55
A&MD Fund	<u>2,100.05</u>
TOTAL	\$64,079.79

We had a very good year. Thanks to all of you, we made our pledge! I will have a yearly report in the next Alert.

Now it is time to start thinking about 2010. Can we do this again? I think so. Put your Penny containers out now so everyone can be a part.

GOD IS SO GOOD!

In HIS Service

Margie Outlaw
Treasurer
43 East King Street
Newton, AL 36352
334-299-6877
moutlaw200@centurytel.net



Education and Interpretation

In the months ahead, Assembly 2010 planners are urging United Methodist Women who have skills in knitting, crocheting or sewing to create prayer shawls and baby blankets for those in need. The shawls and baby blankets may be made from fabric, knitting or crocheting yarn. **Suggested sizes for the prayer shawls are: triangle 65" long and 32" center back, rectangle: 19" x 69" or 14" x 70".** These are suggestions and should not limit your creativity. In the months immediately preceding Assembly 2010, United Methodist Women members should take completed prayer shawls and baby blankets to their local churches to be blessed. Then send the shawls to Linda C. Douglas, Women's Division, 475 Riverside Drive, Room 1504, New York, NY 10115 by **March 1, 2010.**

Prayer shawls and blankets will be on display in the Experience Hall area of Assembly, 2010. At the end of Assembly, the shawls will be distributed to those in need. Some of the shawls will be available for purchase for a minimum \$25 donation with proceeds going to United Methodist Women's Mission Giving. In a spirit of Faith-Hope-Love in Action, use your talents and skills to share warmth and love with others.

ON THE ROAD TO ASSEMBLY: We have chartered a 55-passenger bus to take us to assembly! Deadline to sign up is **February 1, 2010.** Sign up and reserve your seat. Make your check payable to AWFUMW and send to **Margie Outlaw, 43 E. King St., Newton, AL 36352.** For more information contact:

Betty Helms, Conference Education and Interpretation,
3043 Headland Ave
Dothan, AL 36303
email bhelms1@centurytel.net

**Sign up and see the bigger picture of mission that is Faith, Hope, Love in Action!
Go to ASSEMBLY!**

Betty Helms
(334) 794-2172

**2010 Spiritual Enrichment Retreat
March 26-28, 2010
"THIS LITTLE LIGHT OF MINE"**

Check-in begins FRIDAY, March 26, 2010, at 4:00 P.M. DINNER 6:00 P.M.
Each person must use a separate registration form.
Duplicate this form as needed.

Important - Make checks payable to: AWF UMW

Mail form and check to: CHARLOTTE HOBSON
PO BOX 191
ELBA AL 36323-0191

(Do NOT mail to Blue Lake)

For additional information contact: Martha Spiva 850-874-0308 or
Charlotte Hobson 334-897-3510

FINAL REGISTRATION DEADLINE: MARCH 12, 2010

**BLUE LAKE ASSEMBLY
REGISTRATION INFORMATION**

NAME _____ PHONE _____

ADDRESS _____

CITY _____ STATE _____ ZIP _____ E-MAIL _____

CHURCH _____ DISTRICT _____

DISTRICT OFFICE HELD _____ CONFERENCE OFFICE HELD _____

PLEASE CHECK YOUR PREFERENCE:

Oakwood Old Wing:

_____ *Triple Occupancy \$86.50 (includes registration)*

Oakwood New Wing:

_____ *Double Occupancy \$113.50 (includes registration)*

Roommates:

1. _____

2. _____

_____ *Single Occupancy \$163.50 (includes registration)*

_____ *Double Occupancy \$101.50 (includes registration)*

District/Conference Officers:

Roommate:

1. _____

Registration \$15.00

(New or old wing will be first (1st) come first (1st) placed

Roommate: _____

_____ *Single Occupancy \$146.50 (includes registration)*

Roommates MUST mail registration forms together. Full payment MUST accompany registration.

REFUND POLICY: No refund of registration fee; no refund of Blue Lake costs after registration deadline which is 2 weeks prior to the Event (exception death in immediate family

***Be sure and note new name and address of where to send
your check and registration.***

ALABAMA-WEST FLORIDA CONFERENCE
UNITED METHODIST WOMEN
HEALTH INFORMATION

Return This Form with Your Registration

Please bring your medical insurance card in case of illness or emergency.

Name _____

Address _____

Telephone Number _____

List all medications you are currently taking and the prescribing physician

Where could medical personnel locate this medication during the sessions?

Specials Needs – Please specify

My physician is _____

Telephone Number is: (day) _____ (night) _____

Insurance Company _____

Policy Number _____

Name of nearest relative _____ Phone number(s) _____

Please select one:

_____ I hereby give my permission for qualified medical personnel to provide any emergency medical care which they may deem necessary. I hold harmless the AL-WFL Conference United Methodist Women, The AL-WFL Conference, The United Methodist Church, and/or Blue Lake for any act or failure to act during a medical emergency.

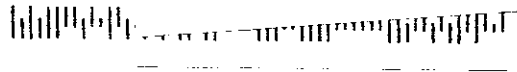
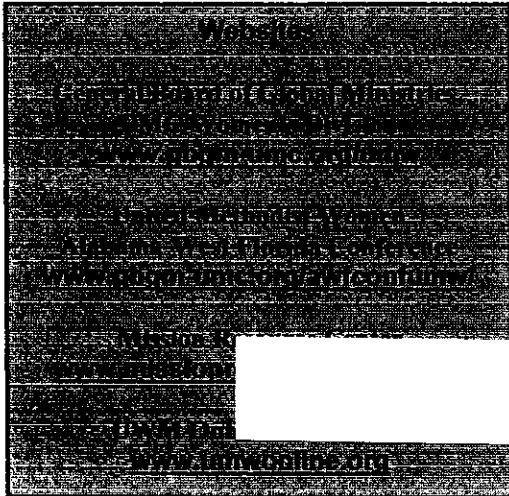
_____ I waive any necessary medical care and hold harmless the AL-WFL Conference United Methodist Women, the AL-WFL Conference, The United Methodist Church, and/or Blue Lake for any act or failure to act during a medical emergency.

Signature _____ Witness _____

Date _____

Alert
Alabama-West Florida Conference
United Methodist Women
Beth Henson, Editor
27558 Stratford Glen Dr.
Daphne, AL 36526
Change Service Requested

Non-Profit Organization
U.S. Postage Paid
Robertsdale, AL Permit 6



ALERT

Subscription Form

All Local Unit Presidents will receive a free copy of the Alert. All other officers and members may subscribe for \$3.00 per year. The March 2010 issue will start the next subscription year.

You may receive a copy of the Alert free by email. You must submit your email address in order to receive your free copy. Please complete the form below to receive a subscription to the Alert by mail or email.

Name _____

Address _____

City _____ State _____ Zip _____

Church Name _____ District _____

Email Address _____

Are you paying for a subscription? _____

Cash or check enclosed? _____

Mail Subscription Form to:

Beth Henson
ALERT Editor
27558 Stratford Glen Dr.
Daphne, AL 36526
(251) 621-4198
bah9103@aol.com