



Alert

Alabama-West Florida Conference United Methodist Women

Volume 37
No. 3
Summer
June
2009



2009 Cooperative School of Christian Mission July 24-25, 2009 Blue Lake Assembly, Andalusia, AL

Geographic

The Beauty and Courage Sudan

For most of the past twenty years the country of Sudan has been plagued with severe drought. Desertification is apparent in the west, where thorn bushes dominate the savanna landscape of South Darfur and are killing out the native acacia trees. The shortages of food due to drought have sometimes reached famine proportions. Climate change in Sudan is not just a looming crisis; it is the reality on the ground. Yet at Sudan's core is beauty. Written by Linda Beher, with study guide by Maxine West, this study offers an extended portrait of Sudan. Explored are an overview of history that began in Bible times; the country's main ethnicities, religions and languages; touch points and possible causes for the wars; and the way Sudanese women are contributing to the peace process and to the culture as a whole.

Spiritual Growth

Food and Faith

This study is about how our faith is nurtured, strengthened, and enhanced by food and all the ways food touches our lives. It is no accident that our most profound sacrament, Holy Communion, is food. In this study, we explore how the bread and fruit of the vine illustrates the magnitude of God's love for us on multiple levels, and how God's presence is invoked and the divine and the ordinary connect in a mystery created by Christ and ordained by God. This study gives information on reasons to fast and healthy ways to fast, and grow from the ritual of fasting. We have John Wesley's words to remind us that we can be both empty and full for God. *"Let me be full, let me be empty. Let me have all things, let me have nothing."* This study reminds us that when we can take the time to explore the spiritual benefits of being full or empty, the food given to us by God for our well being will satisfy more completely.

General Issue

Giving Our Hearts Away: Native American Survival

The purposes of this study are to learn about the inter-relatedness between the indigenous peoples and their land, to identify selected key issues affecting the Native Americans in the United States and to examine the root causes of these issues, to understand and appreciate the "Give Away" culture of the Native Americans in the areas of spirituality, ecology, language, story-telling, food, and to lead the participants to act as responsible US citizens and Christians in accompaniment and solidarity with Native Americans. Some important issues to be discussed include myths concerning Native Americans, sovereignty issues and definition of tribe, economic development and gaming, unemployment and alcoholism, the place of the church in Native American spirituality.



Mission Team 2009

Beth Bowdin
President

Georgette Griffith
Vice President

Mary Jo Morton
Secretary

Margie Outlaw
Treasurer

Beth Henson
Communications
Coordinator

Ruth Ann Powers
Program Resources

Nancy May
Chair, Nominations

Virginia Lindley
Blue Lake

Mission Coordinators

Virginia Lindley
Spiritual Growth

Edna Williams
Social Action

Betty Worthington
Membership
Nurture & Outreach

Betty Helms
Education &
Interpretation

Mary Lou Brown
Spanish Language

Dr. Paul Leeland
Bishop

Elizabeth Andrews
Dean of School of
Missions

Charlotte Hobson
Registrar

Lynn Hamric
Women's Division
Director



From the desk of the President...

Greetings my sisters,

Spring has arrived with all its beauty! In taking stock of my yard, I discovered some plants needed pruning, resetting, fertilizing, or replacing. Perhaps we should take a look at our United Methodist Women units. Should some things be pruned, reset, fertilized (with enthusiasm), or replaced in order to reach our goals for this year?

Will your unit be a Mission Today Unit; a 5 Star Unit; a Charter for Racial Justice Policies Team; participants in the Reading Program; one that has met pledges and supported conference askings for our sponsored agencies; and collected pennies for mission? There is still time before District and Conference Annual Days! Units that do not meet the summer months may have to "hit the ground running" when you begin again. But...you can do it!

When tossing out magazines I look back through to see if I missed something interesting. The January-February Interpreter had an article that caught my attention entitled, "If your Church Closed Today.." Using this thought---"If your unit disbanded Today..."

*Who would notice?

*Would the 100 US Mission institutions and 300 World Missions have to cut services to women, children, and youth?

*Would some child go hungry, be homeless, or go without medical care?

Just so you know, your unit would be missed very much!!! Each unit is important to the work of United Methodist Women. As the saying goes, "If not you, then who?" ("If not me, then who?")

I know much good work is being done in each District. I was privileged to attend the Marianna/Panama City District Spiritual Day and saw and heard of the good things going on there. From your District Newsletters, I am able to read about the happenings in your District. I am excited to see all that is going on in Mission in AWF Conference by the eight Districts. When it is all considered together, AWF United Methodist Women **ARE** making a difference in lives of women, children and youth here and in the world at large.

This year marks 140 years of mission to women, children and youth by United Methodist Women and their predecessor groups. What a wonderful legacy and we are a part of! It is a privilege and a trust left to us. Therefore, it is up to us to continue this mission work so that 140 years from now these needed services will still be reaching out to these special people in Christ name. That is why it is necessary that we continue to be "SPARKS".

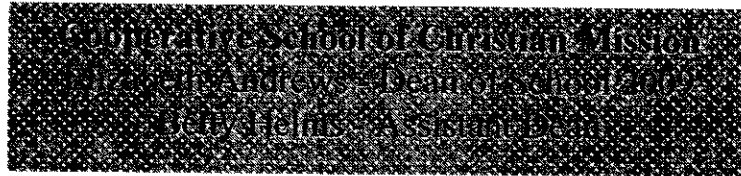
Looking forward to seeing you at Annual Conference in June and/or the Cooperative School of Christian Mission in July.

In Mission together,

Beth Bowdin, President
bbowdin@entercomp.com
 (334) 898-7676



"We are
SPARKS!
 Pass it on!"



Elizabeth Andrews



Betty Helms

**Greetings from Elizabeth Andrews, Dean, &
Betty Helms, Assistant Dean**

We are so excited about the school this year and want to share this excitement with you. Make plans to come to Blue Lake and learn about missions! Our primary goal is to prepare you to go back to your church equipped to teach others the importance of mission. *"Together At The Table"* is our theme for this year's school. We challenge each of you to come and gather at the table to be fed and go out into the world to feed others.

Three (3) scholarships available for CSCM

The scholarships are offered to qualified participants, those who are first time attendees. Each scholarship is on a one-time basis.

- The Don Brill Scholarship is available to new clergy in the AWF Conference.
- Nell Chance Scholarship is available to a new member of UMW that has never attended AWF CSCM.
- Lib Claridy Scholarship is available to a lay person who has never attended AWF CSCM.

Contact Joanne Ashley for additional information at ashleyjy@bellsouth.net or (334) 213-0051.

**Alabama-West Florida Conference
Cooperative School of Christian Mission**

"Together At The Table"

Sponsors:

**Alabama-West Florida CORE Team
Board of Church & Society
Conference Board of Global Ministries
United Methodist Women**

"Together at the Table"

For generations, the table has been an important symbol for the gathered community. It is around the table that food is shared, discussions are held, decisions are made, crafts are crated and board games are played. As Christians, we are reminded of the significance of the table in Jesus' life and ministry. All along His journey, Jesus shared meals in the home of friends. In the temple, he overturned the tables of injustice. On the eve of His death, around the table with his disciples, he broke bread and set forth a means of grace for all who would believe. Yes, when we gather at the table, there are contradictions. At the tables, there is feast and there is famine. At the table, treaties are made and treaties are broken. At the table, hospitality is offered and hospitality is denied. At the table we gather to celebrate and we gather to grieve. At the table, there is peace and there is conflict. At the table, there is hope and there is doubt. Our human frailties and the realities of the world in which we live to often divide and exclude people at our tables. The Christ we follow calls us to a higher standard of living and loving as together we work for peace and justice for all of creation. Though we are many, we are bound by a living God who goes before us and embraces all. In the sacred circle of life, enfolding the world and all that dwells therein, all are together at the table of God's love.

Cooper's School of Christian Mission
 Teaching Adults to Teach Missions to Children
 Alicia Cargill



Alicia Cargill

Alicia Cargill grew up in Wetumpka, AL and graduated from Elmore County High School. She went to Chattahoochee Valley Community College on a cheerleading scholarship for two years. She transferred to Auburn University in Montgomery and graduated with a Bachelor's Degree in Liberal Arts. In college, Alicia was involved in Student Government Association and Alpha Gamma Delta Sorority. She went to Asbury Theological Seminary and graduated with a Master's in Christian Education. Alicia has worked with youth for eight years. She is currently working at Ozark First United Methodist as the youth, program, and Christian Education minister. During Alicia's college years, she has been involved in several mission trips throughout the United States and internationally, which includes countries in Central and South America, Europe, Southeast Asia, and Africa. Alicia enjoys mission work, horseback riding, and teaching and performing praise dance.

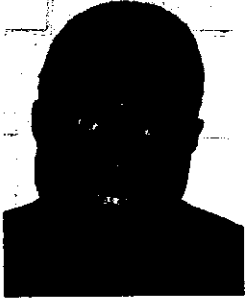
**"Teaching Adults
 to Teach
 Missions to
 Children"**

This course is designed to help persons who are responsible for encouraging children to become active in mission responses. The persons enrolled in this course will be studying a particular country or countries. Discussion will be given as to how children can respond to the needs of others around the world. Think of it as an introduction to children about God's call to mission. In this course, how children learn, what is learning, what are children like today, and how to use the curriculum most effectively are taught.

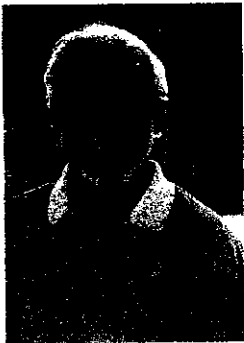
"Lord, you have been our dwelling place in all generations. Before the mountains were brought forth, or ever you had formed the earth and the world, from everlasting to everlasting you are God."

Psalm 90:1-2

Cooperative School of Christian Mission
 Spiritual Growth Study, Food and Faith
 Study Leader
 Rev. Eric Powell, Rev. Jim Luther, and Rev. Karen Evans



Rev. Eric L. Powell was called to the gospel ministry at twenty-one years of age and has been preaching since the age of twenty-two. He has served in a myriad of church leadership positions throughout the congregation from Sunday school teacher to Pastor. He is a graduate of Chicago State University and has done postgraduate work at Eden Theological Seminary, St. Louis, MO. He was certified as a Local Pastor in November 2005. He is currently enrolled in the Course of Study for United Methodist Pastors at the Candler School of Theology, Atlanta, GA. In addition to his pastoral duties he currently works as a Prevention and Education Coordinator for Alcohol and Substance Abuse at Fort McPherson, GA. He has recently retired from the U.S. Army Chaplaincy with over 30 years total service as a Master Sergeant (E8), Senior Chaplain Assistant Noncommissioned Officer, (NCO), Operations and Administration NCO serving at 2, 3 and 4 Star Commands. He is a veteran of the Persian Gulf War where he was awarded the Bronze Star Medal. He is a former Army Recruiter earning his Recruiter's Ring. He is currently serving as pastor of the Wesley Chapel UMC-Elberton, in the Athens-Elberton District of the North Georgia Conference. He is married to the formerly Paula Marie Pulliam of St. Louis, MO and they reside in Ellenwood, GA.



Rev. Jim Luther is the son of a Methodist Minister and was called into the ministry in the fall of 1961. He received a B.A. and Ph.D. from Bob Jones University, Master of Divinity from Central Baptist Theological Seminary and did graduate work at Stout State University. He also received a M.A. from the University of Detroit and was a visiting scholar at the University of Michigan. He did a summer study at E'cole Biblique, Jerusalem. He has been a pastor for 17 years. He was an Assistant Professor of Biblical Studies at Tennessee Temple University, Associate Professor of Old Testament at Detroit Theological Seminary, and Adjunct Professor at RIMI Theological Seminary, Nagpur, India. He did field archeology work in Tel-Zeitah, Israel and mission work in Bombay, India. Currently he is the Associate Pastor at Lynn Haven UMC. He and his wife, Virginia Kay, have seven children and live on a private airpark. He enjoys flying his 1941 Luscombe airplane in his spare time.



Rev. Karen Evans received her MRE from Duke Divinity School and Specialist in Education from the University of Florida. She joined the church staff at Pensacola First UMC in June of 1987. Karen is an ordained Deacon and oversees the spiritual formation ministries for all ages at her church. She works to empower laity and staff to offer ministries that will invite persons of all ages into a deeper relationship with God. She is also a certified Spiritual Director and provides direction for groups and individuals. She also oversees prayer ministries including the conference labyrinth ministries. Her greatest passion in ministry is to help translate complicated theological ideas into simple terms for children, youth and adults. Karen's hobbies are reading, walking, college basketball, cross-stitch, hanging out with children and youth and laughing. She is married to Tim Evans, Executive director of Manna Food Pantries and the mother of Zach and Luke. She is deeply honored and grateful for the opportunity to walk with others on their faith journey.

Cooperative School of Christian Mission
 Celebrates 50th "The Faith and Courage of the Sudan" - Ruth Gynter
 One of Us: Going On Her Own Way - Native American Survival
 Reverend Margaret Battiest



Ruth Gynter

Ruth grew up in southwest Alabama with Methodist as part of her identity. She was active in Wesley Foundation at both Montevallo, where she received her Bachelor's Degree and at UNC where she did graduate work. She taught psychology at the University of MO, St. Louis and is retired from the Psychology Department of Auburn University.

Her association with Methodist women goes back to a student circle of WSCS at Montevallo, and she has been a member since 1956. She has served at the local, district, and conference levels and recently completed a term as Conference Chair of the Commission on the Status and Role of Women. She represents Auburn United Methodist Women with AL/ Arise.



**Reverend
Margaret Battiest**

Rev. Battiest is a member of the Mississippi Band of Choctaw Indians and currently serves as District Superintendent in the Northern District of Oklahoma Indian Missionary Conference. As a young child, Margaret knew she had a call and purpose for her future. "And then one day, I finally said yes to God's call and what a journey it has been," said Margaret.

A clergy member for ten years, Rev. Battiest reflects on God's call on her life; "I just try to live the life that my grandmother imparted to me and that is to be who God created me to be. If I try to be someone other than who God created me to be, then I will not be happy."

Margaret has two children, Charles and Jennifer. Jennifer followed in her mother's footsteps and is also a minister. They are among a small number of mothers and daughters serving as clergy members in the United Methodist Church.

In the April 2008 issue of the Response, there is an article entitled "A Mother and Daughter in Ministry". This article features Margaret and her daughter, Jennifer. They are examples of service in their home conferences and across the connections of the United Methodist Church, serving as witnesses to God's call on their lives.

**South Atlantic Regional
School of Christian Mission
June 11-14, 2009**

The South Atlantic Regional School of Christian Mission will be held at Kentucky Wesleyan College, Owensboro, KY. This event is sponsored by Women's Division and will be for Study Leaders and Conference Officers from the Southeastern Jurisdiction.

Cooperative School of Christian Mission
 Music Leaders
 Charlene Lord and Elizabeth Bell



Charlene Lord

Charlene Lord is a member of Marianna FUMC where she has sung in the chancel choir and played in the hand bell choir. She retired as a mathematics instructor in 2002 and has since returned to Chipola College to teach part-time. Charlene is chairman of the Staff-Parish Relations Committee and treasurer of the UMW Lula Rawls Service Guild.

Elizabeth Bell



Elizabeth Bell is a member of First United Methodist Church in Marianna, FL. She sings in the Sanctuary Choir and is a member of the Songsters, a group of retired persons in the church who sing for fun and entertain at local retirement centers. She is a retired elementary teacher. Elizabeth serves as Lay Delegate to Annual Conference.

Both ladies are very talented and have led music at several events sponsored by United Methodist Women in the past years. They led the music for the 2008 Tapestry Retreat in Dothan.

Each year at the Cooperative School of Christian Mission we have an offering to support one or two significant mission projects. Once we have studied about mission needs, we feel called to respond to those needs. This year, as we study about the difficulties faced by people of the Sudan and as we study about the struggles of the Native Americans, we searched for mission projects recommended by the Board of Global Ministries where our gifts could make a tangible difference. **Our offering proceeds will be divided between the Sudan Shalom Ministry (Advance # 3020787) and the Native American Children's Fund (Advance # 583581).** The Shalom Ministry cares for children left orphaned in the Sudan due to the war and to HIV/AIDS. The Native American Fund provides school clothing for needy Native American children and assists small churches in the Oklahoma Indian Mission Conference purchase supplies for Vacation Bible School. For more information about these projects, check out:

<http://new.gbgm->

[umc.org/advance/projects/search/index.cfm.](http://new.gbgm-umc.org/advance/projects/search/index.cfm)

The committee hopes that you will come to School of Missions with a heart for mission and leave with a renewed commitment to bring Christ's love and care to all God's children. We look forward to seeing you in July.

Elizabeth Andrews, Dean

Cooperative School of Christian Mission

The organized unit of United Methodist Women shall be a community of women whose PURPOSE is to know God and experience freedom as whole persons through Jesus Christ; to develop a supportive fellowship; and to expand concepts of missions through participation in the global ministries of the church.

**Alabama West Florida Conference
UMW Mission Giving
First Quarterly Report
January 1, 2009 through March 31, 2009**

Pledge To Mission	\$	10,773.57
Special Mission Recognition	\$	695.00
Gift To Mission	\$	1,517.80
Gift In Memory	\$	1,216.00
World Thank Offering	\$	2,794.49
A Call to Prayer and Self Denial	\$	2,644.77
Assembly Offering	\$	40.25
UMCOR (In Memory)	\$	400.00
UMCOR	\$	2,863.38
Dumas Wesley	\$	1,136.81
Nellie Burge	\$	1,136.81
Noah's Ark	\$	1,136.82
S.K.I.P.	\$	1,036.82
Mobile Inner City	\$	1,086.82
Assembly/Jurisdiction Love Offering	\$	267.40
Blue Lake	\$	2,934.50
A&MD Fund	\$	2,934.50
TOTAL	\$	34,615.74

Included in Pledge to Mission
above:

Pennies for Mission \$ 479.98

Important Dates to Remember

2009

- **June 7-10, 2009**
Annual Conference
Frazer Memorial UMC
Montgomery, AL
- **June 11-14, 2009**
South Atlantic Regional
School
Kentucky Wesleyan
- **July 10-11, 2009**
Executive Committee
& Nominations Meeting
Blue Lake
- **July 24-25, 2009**
Cooperative School of
Christian Mission
"Together At The Table"
Blue Lake
- **October 3, 2009**
Executive Committee
& Nominations Meeting
Blue Lake
- **October 30-31, 2009**
District Officer Updates
Conference Annual Meeting
Blue Lake
- **November 8, 2009**
United Methodist Women's
Sunday

Treasurer's Report

I was told by some of the Districts at Spiritual Retreat that they were going to be the winners this year. Start your penny collection now and let's see who wins. I would like to challenge us to do better than last year. I have Faith that we can!

Remember, when you need that special card, buy it from the UMW. Get a card and donate to Missions!

In His Service

Margie Outlaw, Treasurer
(334) 289-6877
moutlaw2010@centertel.net



Blue Lake

Each District Blue Lake representative has received a list of needs for Blue Lake. This list includes a variety of cost so that each United Methodist Women's unit can respond to this list. I hope that your unit will make an effort to respond to this list. The "Race to the Finish" for the Blue Lake capitol funds campaign will receive the offering at Annual Conference. Please, as United Methodist Women, encourage your local churches to continue their monetary support of Blue Lake, as well as attending the events that are planned for Blue Lake, as many of the events are for the total church. Also I hope that you are making plans to attend the Cooperative School of Missions at Blue Lake on July 24-25. We hope that many of our employed United Methodist Women will be able to attend this two-day event. You may be the one to start the "ball rolling" on going to Blue Lake.

Virginia Lindley
Blue Lake Representative
(850) 235-7879
vlindley@bellsouth.net



From the UMW Vice President

One purpose of United Methodist Women is to expand concepts of mission through participation in the global ministries of the church. In the past, Alabama/West Florida United Methodist Women have made a difference in the world around us by participating in providing materials for school kits, flood buckets, health kits, making layette kits, medicine bowls, quilts for the Children's Home to mention a few. This year (as last year) we will collect "Pennies for Mission". As UMW, we are asking EVERYONE in all the churches to dig deep for all your change, bills and checks all year for this project. If you have not started, then DO IT NOW and keep it up until Annual Conference Day, October 31st. Make plans to attend the Cooperative School of Christian Mission. We have some great study leaders. We hope the short event will allow more to attend--we can all be home for our duties on Sunday. Please make plans to attend. I want to thank all of you for your prayers, concerns, cards, and phone calls during my surgery and recovery. My UMW Family means so much and I really appreciate your caring.

In His Service,
Georgette Griffith

Nominations

We are still in need of officers for next year to fill positions for 2010-2012. If you have not filled out a talent bank form and feel you can serve now and have not been contacted, please let me or a Nomination Committee Member know of your interest. The Talent Bank form can be found on our web site at this link:

<http://www.gbgm-umc.org/awfconfumw//talentbankform2008.pdf>

We need your Gifts and Talents!

In His Service,

Nancy May
Nominations Committee Chair
(850) 994-1108
monkmay@yahoo.com

Spiritual Growth

The Holy Spirit was alive and well at the Spiritual Enrichment Retreat at Blue Lake on March 27-29! God was certainly there with us. I feel certain that the United Methodist Women in attendance truly experienced spiritual growth. Nancy Beardon Hudson did a superb job as our main presenter for the theme "On the Anvil" by Max Lucado. Our very own Rev. Tonya Elmore and Sara Munday taught us so much about "We Would See Jesus" and the 13th chapter of Corinthians. All of our devotion leaders were very inspiring and informative. Our musicians, Deborah Rice and Beth Henson, did a wonderful job in leading our music. I have never seen a more beautiful and meaningful worship center - one created by Betty Helms. If you missed the Spiritual Enrichment Retreat this year, begin making plans now to attend next year. Don't forget to register now for the Cooperative School of Missions on July 24-25 at Blue Lake. I would like to challenge each one of you to begin or to continue to think about your individual spiritual growth. Can you give more time to your prayer life? Can you study the scriptures more? Can you give more time in finding the needs of others and give time to helping with those needs? And may God continue to bless us in His service.

Virginia Lindley
vlindley@bellsouth.net

Social Action

As I promised in the last issue of Alert, I bring you news from my attendance at the **7th Annual Ecumenical Advocacy Days and the Women's Division Washington Office of Public Policy Legislative Event held in Washington, DC, March 12-16.**

Each Ecumenical Advocacy Days conference focus is for Global Peace with Justice. The Advocacy Days 2009 theme "*Enough for All Creation,*" dealt with the global issues of care for creation and climate change in our work for planetary justice. God created the earth and declared it "good." As people of faith – called to protect the vulnerable and to the care and keeping of God's earth – we are gravely concerned that the impacts of climate change have and will dramatically and negatively alter God's gracious gift of creation. Because the effects of global climate change are already impacting those least able to cope with them, addressing global climate change is also a justice issue.

Some specific workshop topics presented were: **Climate Change; Migration, Immigration & Displacement; and Poverty & Development.** Through the workshops attendees learned about the connections between climate change, migration and poverty in the U.S. and around the world. Discussions focused on the abundance of our world and how it can be allocated in a way that is fair and just for all creation.

On Monday, March 16, those able to attend (I did not) visited their Representatives and Senators to advocate for Congress to:

- **Reduce Climate Change Emissions**
- **Support Vulnerable Communities: Domestic and International**
- **Assist and Welcome Climate Migrants**

The Women's Division Office of Public Policy Legislative Event was for new annual Conference Social Action Coordinators and new Green Team members. Five of us attended at our own expense. The 2009 theme was "*Healing and Hope: Defending the Earth in the Climate Crisis.*" A particularly interesting presentation was from the organization Women Thrive Worldwide (www.womenthrive.org). Highlights were as follows:

- **We have to reach women if we are to succeed in combating global poverty.**
- **Women must be at the table to set the political and economic agenda.**
- **An income gives women options – it combats poverty.**
- **Ensure that women are included in agricultural policies – Look at the country context (both male and female farm).**
- **Reform trade policies so that women can market their products.**
- **Climate change affects men and women differently.**

Another presentation by www.womenandenvironment.org focused on Climate Change/Global Warming/Impact of Clean Air, particularly as it impacts the issue of environmental racism.

Shalom,

Edna L. Williams
Social Action Coordinator
(334)727-0314
elwilli@bellsouth.net

Education and Interpretation

Our journey together continues as we move forward to meet the challenges that this year brings...challenges that we will meet head on as God molds us into the United Methodist Women He needs and wants.

Are you working on your unit becoming a Mission Today Unit? Many opportunities abound for those in search of becoming a Mission Today Unit!!!

The Cooperative School of Christian Mission at Blue Lake is like a window to the world for United Methodist Women. This is a chance to put your nose against the window pane and look into a world that we may not be able to personally travel to, but not to worry, our teachers will take you there through...our geographic study of the Sudan...our Spiritual Growth Study on Food and Faith and the general issue study on Giving Our Hearts Away: Native American Survival

As we look through that window again, don't forget those people that are serving out there. They are listed in your Prayer Calendar and need a card from your unit. If you send cards to five of them, you have fulfilled Mission Today criteria # 6.

So take a vacation and see the world through the eyes of United Methodist Women at *OUR* window to the world—the Cooperative School of Christian Mission. See YOU there!

Betty Helms
Mission Coordinator
(334) 794-2172
bhelms1@centurytel.net



Secretaries' Report



Dear Secretaries:

There are a variety of skills that one needs to have to be an efficient secretary. Regardless of how well you think your note taking is, you should use some sort of recording device in case there is a question about what was said in a meeting. It also helps to have someone man that recording device unless you use a digital tape recorder so that you are not distracted by it. Then interpret your notes as soon as possible. You will have already developed some shorthand that means something only to you so you need to decipher it.

Remember that our Conference President and I should get a copy of any correspondence that you send out as secretary for your district. The local secretaries should send you any copies of correspondence that they send out. Whether the president wants to see it is up to them.

Have a wonderful summer and come back to UMW in the fall ready to set the world on fire.

For His Service,

Mary Jo Morton
Secretary
(850) 482-3688
mjmorton@embarqmail.com

Mark Your Calendars!
Tapestry Retreat
February 26-27, 2010
Hosted by Pensacola District

Alert
Alabama-West Florida Conference
United Methodist Women
Beth Henson, Editor
27558 Stratford Glen Dr.
Daphne, AL 36526

Non-Profit Organization
U.S. Postage Paid
Robertsdale, AL Permit 6

Websites

General Board of Global Ministries,
UMC/Women's Division
www.gbgm-umc.org/umw

United Methodist Women
Alabama-West Florida Conference
www.gbgm-umc.org/awfconfumw/

Mission Resource Center
www.missionresourcecenter.org

UWM Online Community
www.umwonline.org



Communications Corner

There are so many exciting ways for United Methodist Women to minister to others in need. Have you thought about how to "rethink church"? Recently, our Pastor challenged us to go out into the world in an effort to "rethink church". We are passing on God's blessings to others when we go beyond the church walls and out into the world. What if church was something we did seven days a week instead of somewhere we went for one hour a week? When was the last time you went out and shared kindness with someone? Some things you can do to share with others:

- bake some cookies or goodies and share them with someone
- visit clients in the nursing home
- send cards to people you don't know
- buy lunch or dinner for someone you don't know
- visit homebound and people in the hospital

These are just a few things we can do to share God's love. Our hope is to broaden our understanding of what Jesus Christ expects of us as individuals and as the church.

Beth Henson
Alert Editor
bah9103@aol.com

