



United
Methodist
Women

FAITH • HOPE • LOVE IN ACTION

ALERT

Volume 42 Fall Issue

SEPTEMBER 2013

CONFERENCE ANNUAL DAY

INSIDE THIS ISSUE:

<i>President's Message</i>	2
<i>Assembly 2014</i>	3
<i>Nominations Report</i>	4
<i>Bold Faith Seminar</i>	5
<i>Program Resources</i>	6
<i>Ed. & Interp.</i>	7
<i>Conference Dates</i>	7
<i>Assembly Bus Info</i>	9
<i>Annual Day Registration</i>	10

2013-2014 Conference Officers

President.....	Betty Helms
Vice President.....	Pat Dodge
Secretary.....	Sheila Hare
Treasurer.....	Kathy McQuagge
Pro. Resources.....	Margie Outlaw
Communications.....	Susan West
Nom. Chair.....	Ruth Ann Powers

Mission Coordinators

Spiritual Growth.....	Georgette Griffith
Social Action.....	Zan Jones
M.N. & O.....	Cheryl Mothershed
Ed. & Interp.....	Margie Miller

Committee on Nominations

Virginia Lindley.....	Sharmon Morris
Louise Mixson.....	Joann Ashley
Ruth Ann Powers....	Imogene Martin

Lynn Hamric

PAUL L. LEELAND

Resident Bishop of the Alabama-West Florida Conference
of The United Methodist Church



Paul L. Leeland was born in Washington D.C. He graduated from North Carolina Wesleyan College with a B.A. degree. He received his M.Div. degree and Th.Min. from Duke Divinity School and his Ed.D. from North Carolina State University.

Paul was ordained by Bishop Robert Blackburn in 1976. As a member of the North Carolina Conference, he served small, medium and large membership churches. He served as the District Superintendent of the Goldsboro District. He was then appointed Assistant to the Bishop and Director of Ministerial Relations serving under two bishops for a total of eight years. The Southeastern Jurisdictional Conference elected him to the episcopacy in 2008.

Paul Leeland was elected as a delegate to Jurisdictional Conference beginning in 1988 and consecutive years through 2008. He was elected as a delegate to General Conference in 2000, 2004 and 2008. He has served general conference boards and agencies. In 2007, he was the recipient of the Red Shoe Award, presented by clergywomen of the North Carolina Annual Conference for "encouragement and support of women in ministry through advocacy, appointment, mentoring and friendship."

After election as a bishop in 2008, Paul was assigned to the Alabama-West Florida Conference where he was reassigned in 2012. He serves on the General Board of Church and Society, Council of Bishops Finance Committee, the Duke Divinity School Board of Visitors, the General Board of Pension and Health Benefits, and is currently the Secretary of the Council of Bishops.

In 1968, Janet Elaine Dowell and Paul Lee Leeland were married. They have three married children: Rebekah, Nora and Paul Andrew. They have five grandchildren: Ryon, Joshua, Andrew, Madeline and William Fielden. Paul enjoys reading, playing chess, going to the theater with Janet, and spending time with his grandchildren in North Carolina.

FROM THE PRESIDENT

OUR 2013 THEME IS "MOVING FORWARD IN FAITH"

On October 11 & 12 we will celebrate 41 years as the Alabama West Florida Conference of United Methodist Women. We rejoice that we are a dedicated community of women. **Come and help us celebrate!**

Your conference program committee has worked hard to plan an exciting and meaningful weekend. We are excited that on Saturday, Bishop Paul Leeland will be our guest speaker.

Friday night will be full of opportunities beginning with a workshop led by Margie Miller, Education and Interpretation Coordinator. After the workshop we will move into the training phase for all district officers. These sessions are open to all.

We are looking forward to welcoming you to your 41st Annual Meeting. We hope you will come for the entire weekend, but we will feel blessed to see you even if just for the day. Bring a friend! This event may be just what your soul needs. With faith on our side and love in our hearts, the Alabama West Florida Conference of United Methodist Women continues to live out our PURPOSE.

This is a good time for you to check the progress of your unit in several areas. The Mission Today criteria is food to use to measure your progress:

- Has your unit given in all five channels of mission giving?
- Has your unit invited a district or conference officer to a unit meeting or event?
- Has your unit participated in a hands-on mission project?
- Do you have members participating in the Reading Program?

If the answer is "no" to any of the items listed, you still have time to complete the requirements to help your unit become a Mission Today Unit in 2013.

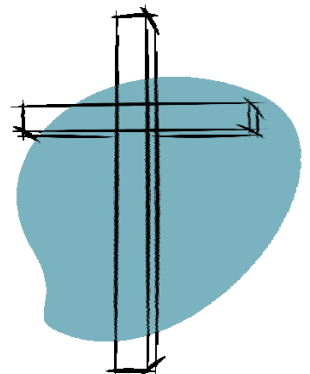
United Methodist Women of the Alabama West Florida Conference are ordinary women doing extraordinary things as they minister to women, children, and

youth! This statement to me is a fitting explanation of the commitment and service of all our UMW members in this conference.

The United Methodist Women's journey in Christian Mission has covered a lot of territory since our foremothers first organized for mission in 1869, but our work is not finished. The "least of these," especially women, children, and youth, still have many needs.

United Methodist Women continue to be called by God to put our faith, hope and love into action to meet these needs. We continue to MOVE FORWARD IN FAITH . . . SO DON'T LOOK BACK—WE ARE NOT GOING THAT WAY!

Betty Helms



The Alabama-West Florida Conference United Methodist Women have a new web address:

<http://www.awf-umw.org/>

Check out the new site—lots of information just for you!

Announcing Assembly 2014: Make it Happen!

We are excited to announce Assembly 2014: Make it Happen!

Assembly is a time for study, worship and fellowship as United Methodist Women members and partners come together from all over the United States and the world.

When: April 25-27, 2014

Where: Louisville, Ky., at the Kentucky International Convention Center



- There is an optional, pre-event Ubuntu Day of Service Thursday April 24.
- Assembly officially begins the morning of April 25 and ends with closing worship at noon Sunday April 27.

Theme & Vision

The theme of the 2014 Assembly is:

MAKE IT HAPPEN! **Turning Faith, Hope and Love into Action**

The 2014 Assembly will focus on:

- **Giving Voice to the Individual**
 - Assembly will honor and equip the individual woman to lead, excel and find her own voice.
- **Connecting for Action**
 - Assembly will help women connect with one another and with partners in mission to further the PURPOSE.
- **Practicing Radical Welcome**
 - Assembly will help women expand their vision and their capacity to welcome new and unnoticed women to participate, join and shape our work.
- **Supporting United Methodist Women Strategically**
 - Assembly will inspire women to support this vital mission movement through engagement and giving.

This vision statement offers building blocks that build from the individual to connecting with our partners and one another to welcoming women from different ages, races, languages and cultures. It also challenges us to consider how we support the work of United Methodist Women now and into the future.

VISIT THIS SITE FOR MORE INFORMATION AND REGISTRATION DETAILS:

<http://new.gbgn-umc.org/umw/news/articles/item/index.cfm?id=1139>

OR

<https://ww2.eventrebels.com/er/Registration/StepRegInfo.jsp?ActivityID=9547&StepNumber=1>

REPORT OF COMMITTEE ON NOMINATIONS FOR TERM BEGINNING 2014

Vice President.....Pat Dodge

Treasurer Margaret Larson

Secretary of Program Resources..... Margie Outlaw

Coordinator of Spiritual GrowthNancy Shealy

Coordinator of Membership Nurture & Outreach Cheryl Mothershed

One year term for Communications Coordinator Laurel Akin

Chair, Committee on Nominations Cynthia Brown

One 4yr term for Committee on Nominations Julia Norton

One 1yr term for Committee on NominationsJennifer Swee

Ruth Ann Powers, Chair



Bold Faith Seminar

The first Bold Faith Seminar focusing on Human Trafficking was hosted by the Alabama/West Florida Conference of United Methodist Women on Friday, May 31 through Saturday, June 1, 2013 at Gadsden Street United Methodist Church in Pensacola, Florida. Approximately 50 persons registered and attended the event. Jennifer McCallum, Executive Secretary for Social Justice Education, United Methodist Women national office served as the facilitator for this event.

Human trafficking has been likened to modern-day slavery that subjects children, women, and men to force, fraud, or coercion for the purpose of commercial sexual exploitation or forced labor. This horrific practice can include prostitutions, pornography, and sex tourism as well as labor for domestic service, factory or construction work, and migrant farming.

Maria Roswold, Program Coordinator, Refugee Immigration program, Catholic Charities of Northwest Florida informed the group on the dimensions of human trafficking. The statistics are staggering. She informed us that human trafficking has been reported in all 50 states in the United States. The rates are particularly high in California, Texas, Florida and New York. It is extremely profitable, generating an estimated \$32 billion in yearly profits.

Other presentators were Toby Detzler, Program Director, Called2Rescue, Elena Stein, Interfaith Action of Southwest Florida and Santiago Perez, of the Coalition of Immokalee Workers of Florida. Santiago Perez captivated the group by use of an interrupter because he was none English speaking. He informed us of the deplorable conditions many Immokalee workers endured on a daily basis.

The Coalition of Immokalee Workers (CIW) is a worker-based human rights organization internationally recognized for its achievements in the field of corporate social responsibility, community organizing, and sustainable food. **CIW** is working to end human trafficking and educate consumers on the issues of farm labor exploitation.

Publix's one of the largest supermarket chains in Florida, and recently opened two stores in Mobile, Alabama were not members of **Fair Food Program**. This is a program established to bring more human farm labor standards and fairer wages for farm workers in their tomato suppliers operation. Santiago Perez as member of the Coalition of Immokalee workers has asked members of the United Methodist Women to take part in a letter mailing campaign to encourage **Publix's** to come on board with the **Fair Food Program**.

We encourage units to get involved to help bring awareness fairer wages for farm workers in their tomato suppliers operation. We encourage all units to make copies of the attached letter included in this article and distribute it to unit members, your church members, family and friends. We want this letter campaign to make a huge impact on **Publix's**. I encourage all Social Action Coordinator's to get your units involved in this event. Let's stand as United Methodist Women together advocating justice for all. **Faith. Hope. Love in Action**

Yours in Christ,

Zan M. Jones, Social Action Coordinator,
Alabama/West Florida Conference



2013 PROGRAM RESOURCES

HAVE YOU READ . . .

***This will be
Remembered of her***

Wm. B Eerdmans Pub-
lishing Co

*In This Will be Remem-
bered of Her,*

*three strands – stories
from Scripture,*

stories of select women

from around

the globe and stories

from religious,

*folk and wisdom tradi-
tions*

*worldwide – are woven
into one*

strong braid showing

how life can be

*made more compelling,
communal*

*and just for all people. In
the end*

the book asks: How will

you be

remembered?

By the time you get this article the Mission u weekend will be over. I trust that everyone who went had a great time.

The next event will be Annual Day at Blue Lake, October 12. Let's make this the best Annual Day ever by encouraging everyone to attend. There will be a great program and business we all need to be involved in.

Don't forget our reading book exchange, bring all your books that are dated 2010 thru 2013 to share.

Be sure to put your name and address in them if you want them back and also the category and date of book. Then you may select some from this table to read.

Look forward to seeing you Annual Day!!

In HIS Service,
Margie Outlaw
Secretary of Program Resources



Be a reading pro!

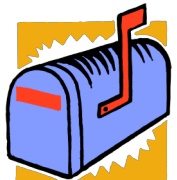
ALERT! . . . Are you a Subscriber?

You too can become informed of Alabama-West Florida Conference United Methodist Women events and/or activities by subscribing to the alert today.

Send your name and address to Laurel Akin, 601 Cedar Drive, Enterprise, AL 36330. Enclose a \$ 4.00 check, made payable to Alabama-West Florida Conference United Methodist Women.

Receive a copy of the *ALERT* free by email. Email laurel36330@gmail.com with your request and you will be added to our email list.

We look forward to hearing from you!



MISSION EDUCATION

What a busy year we had with all the opportunities to learn about United Methodist Women. All Education & Interpretation Coordinators need to have the Mission Today Reporting Form and the Mission Study Report Breakdown Form completed and sent to the Conference Education & Interpretation Coordinator by September 10, 2013. This needs to be in for the Annual Day program because the awards for the districts are determined by information on these forms.

Please be aware that October 11, 2013 is District Officer Leadership Training at Blue Lake. If your district does not have an Education & Interpretation Coordinator please have a representative from your district to attend this meeting.

Also on October 12, 2013, is Alabama West Florida United Methodist Women's Conference Annual meeting at Blue Lake. This is a time to celebrate the giving of the awards to the districts and the conference members. We are honored to have as guest speaker, Bishop Paul L. Leeland.

Remember our goal is that each unit will meet its pledge to missions. May we all pray and work to make this happen.

God Bless,

Margie Miller

Education & Interpretation Coordinator

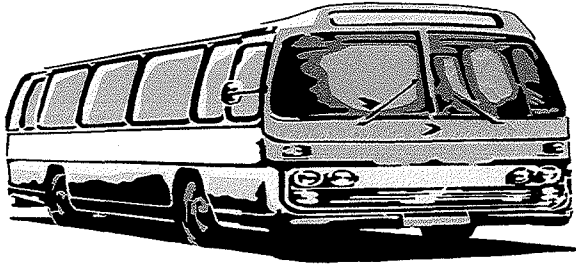
margiem@fairpoint.net or call 850-229-6502



Date	EVENT
October 11	District Officer Leadership Training, Blue Lake
October 12	AWF UMW Conference Annual Meeting, Blue Lake
January 3-4	Conference Executive Meeting, Blue Lake
January 10-12, 2014	COSROW
February 21-22, 2014	Tapestry—Demopolis
March 21-23, 2014	Conference Spiritual Enrichment, Blue Lake
April 24-27, 2014	Assembly 2014: Louisville



Pictures by Laurel Akin



LOUISVILLE.....HERE WE COME!

Travel with us to Louisville, experience Assembly 2014!

ASSEMBLY 2014...MAKE IT HAPPEN!

Kentucky International Convention Center – Louisville, KY

APRIL 25 – APRIL 27, 2014

United Methodist Women assemble every four years to celebrate, to lift up, to learn, and to return to their communities better equipped for mission.

Assembly 2013 has been themed: Make It Happen!: Turning Faith, Hope and Love into Action. The 2014 Assembly will focus on: Giving Voice to the Individual, Connecting for Action, Practicing Radical Welcome, and Supporting United Methodist Women Strategically. The vision statement offers building blocks that build from the individual to connecting with our partners and one another to welcoming women from different ages, races, languages and cultures. It also challenges us to consider how we support the work of United Methodist Women now and into the future.

It is an exciting experience to be part of this large gathering of United Methodist Women. Make plans to join us in Louisville!

Our conference has been challenged to have **150** women attend Assembly. You can help make this happen. Register now! Go to www.assembly2014.org to register online.

Registration fee is \$225 per person if you register ONLINE on or before November 30, 2013. After that date, the registration goes to \$260. Register early to take advantage of the discount! Note: no meals are included in the Assembly registration fee.

Debbie Bell, Mobile District President has reserved a charter bus, which will depart from Mobile with a possible pickup in the Baypines District. Jolinda Strickland, Dothan District President, has also reserved a charter bus, which will depart from Dothan with a possible pick up in Montgomery. Make your reservations now! The number of reservations will determine the cost. Approximate cost should be in the neighborhood of \$200-\$250 per person. This does not include any motel, meals or registration fee for Assembly.

Currently, we have two scholarships available for anyone wishing to attend Assembly 2014. Our conference is offering a \$600 scholarship and the Southeastern Jurisdiction Core Planning Group is offering a \$400 scholarship. Criteria for either scholarship are: Never attended an Assembly.

**LOOK FOR MORE INFORMATION ON OCTOBER 11-12, 2013 AT OUR
UNITED METHODIST WOMEN'S ANNUAL MEETING!**

**ALABAMA WEST FLORIDA CONFERENCE UNITED METHODIST WOMEN
REGISTRATION FOR 41st ANNUAL MEETING**

Workshop & District Officer Update: October 11, 2013

Annual Day: October 12, 2013

**“Moving Forward in Faith”
Special Guest Speaker: Bishop Paul Leeland**

Who should attend?

*All United Methodist Women

REGISTRATION DEADLINE: Oct. 1, 2013

*Bishop, District Superintendents, and Ministers

*Each unit has ONE voting delegate and MUST pre-register

**FRIDAY AND SATURDAY REGISTRATION: Begins @ 3 p.m. in Lodge
ANNUAL DAY REGISTRATION ONLY: Registration begins @ 8:30 a.m. in GYM
All participants must pre-register**

Name: _____ Email: _____

Address: _____ City: _____ St: _____ Zip: _____

Hm Phone: _____ Cell: _____ District: _____

Conference Officer ☐ District Officer ☐ Office you hold: _____

Local Unit Voting Delegate ☐ District Superintendent ☐ Clergy ☐ Youth (under 18) ☐

**REGISTRATIONS RECEIVED AFTER SEPT. 24TH WILL BE CHARGED \$10.00
LATE FEE - NO REGISTRATIONS WILL BE ACCEPTED AFTER OCT. 1, 2013.**

PLEASE CHECK YOUR PREFERENCE: (includes registration, lodging & meals)

Friday and Saturday ☐

Saturday Only ☐ **\$20.00**

LINWOOD WING:

Double Occupancy \$60.00

Single Occupancy \$85.00

CENTER SECTION:

Triple Occupancy \$45.00

Double Occupancy \$55.00

Single Occupancy \$65.00

ROOMMATES: _____

ROOMMATES MUST MAIL REGISTRATION FORMS & FULL PAYMENT TOGETHER

Linwood is available on “FIRST COME” basis; Rooms are reserved when payment is received.

CONFERENCE AND DISTRICT OFFICERS PAY ONLY \$10.00 (Single rooms \$25 additional) Late fees will apply for late registrations

Make checks payable to AWFUMW –

Mail to: Sheila Hare, Registrar @ 4074 Lafitte Rd Saraland, AL 36571 sshare13@gmail.com

➤ **FRIDAY WORKSHOP BEGINS @ 4 p.m. DINNER @ 6:00 P.M.**

➤ **OFFICER TRAINING and OTHER OPPORTUNITIES @ 7:00 P.M.**

Special Needs: _____ **Child Care Needed:** _____

HEALTH FORMS SHOULD BE COMPLETED AND MAILED WITH REGISTRATION OR PRESENTED ON DAY OF REGISTRATION IF ONE HAS NOT ALREADY BEEN SUBMITTED FOR 2013.

ALABAMA/WEST FLORIDA CONFERENCE
UNITED METHODIST WOMEN
HEALTH FORM

Authorization for Emergency Medical Treatment Form

Name: _____ DOB _____

Home Phone: _____ Work # _____ Cell# _____

Physician's Name: _____ Phone #: _____

Health Insurance Company: _____ Policy# _____

Allergies to medications: _____

Current medications: _____

In the event of an emergency, contact:

Name: _____ Relation: _____ Phone# _____

Name: _____ Relation: _____ Phone# _____

In the event emergency medical aid/treatment is required due to illness or injury during my stay at a UMW event, I authorize AL/WF UMW to:

1. Secure and retain medical treatment and transportation if needed.
2. Release my health information to the authorized individual or agency involved in the medical emergency treatment.
3. I hold harmless the AL-WFL Conference United Methodist Women, the AL-WFL Conference, The United

Methodist Church and/or the owners of the facility for which the event is taking place for any act or failure to act during a medical emergency.

Date: _____ Consent Signature: _____

Consent Plan

This authorization includes x-ray, surgery, hospitalization, medication and any treatment procedure deemed "life saving" by the physician. This provision will only be invoked if the person(s) above is unable to be reached. I hold harmless the AL-WFL Conference United Methodist Women, the AL-WFL Conference, The United Methodist Church and/or the owners of the facility for which the event is taking place for any act or failure to act during a medical emergency.

Date: _____ Consent Signature: _____

Non-Consent Plan

I DO NOT give my consent for emergency medical treatment/aid in the cases of illness or injury. In the event emergency treatment/aid is required, I wish the following procedures to take place:

I hold harmless the AL-WFL Conference United Methodist Women, the AL-WFL Conference, The United Methodist Church and/or the owners of the facility for which the event is taking place for any act or failure to act during a medical emergency.

Date: _____ Consent Signature: _____

Date: _____ Witness Signature: _____

Young Ladies Annual Day

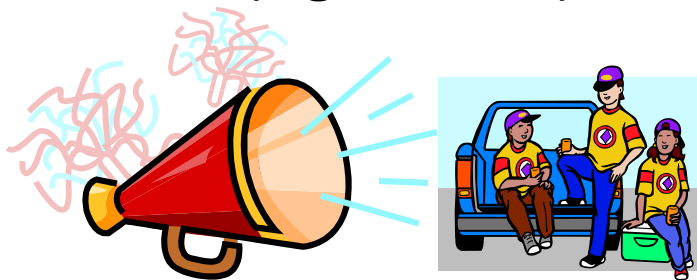
Saturday October 12, 2013

Blue Lake

Andalusia, Alabama

IT'S A TAILGATE PARTY!!!!!!

(Ages 6- 13)



Come and get excited about United Methodist Women! We will have lots of Fun, Food, Entertainment and Excitement.

We will have plenty of Pom Poms in varsity's colors and a lot to Cheer about.

The Fun will begin with registration at 8:30am, in the Oakwood gym.

Bring Vans, Buses and cars, there will be a contest to see which District will have the most!

For more information:

email Cheryl Mothershed cgmbells@yahoo.com

or call 251-229-1339.



Keynote Speaker
Dr. Connie Shelton

Former Co-Senior pastor of Galloway Memorial United Methodist Church in Jackson, is the new Director of Communications and Connection for the Mississippi Annual Conference. Connie and her husband, Joey, were previously appointed to Galloway in 2008 after serving as Co-Directors of Field Education/Church Relations at Duke Divinity School in Durham, NC. Both Joey and Connie are elders in the Mississippi Annual Conference of the United Methodist Church.

Connie is a native of Picayune, MS. She previously served as Executive Director of The United Methodist Hour, headquartered in Hattiesburg, MS. Connie is a graduate of the University of Southern Mississippi with a Bachelor's Degree in Radio, Television, and Film, and a Master's Degree in Public Relations. Her Master of Divinity is from Duke University and Doctor of Ministry is from Columbia Theological Seminary, Decatur, GA.

The Sheltons have two daughters, fourteen-year-old Bailey and nine-year-old Jessica.

Schedule

Friday, February 21

4:00-5:15pm	Registration
5:30pm	Opening Ceremony
6:00pm	Dinner & Entertainment
7:00pm	Assembly— Dr. Shelton

Saturday, February 22

7:30-8:00am	Registration
7:30am	Continental Breakfast
8:00am	Morning Assembly & Devotion
8:30am	Focus Group Session 1
9:30am	Focus Group Session 2
10:30am	Break
11:00am	Assembly— Dr. Shelton
12:00 noon	Lunch

Tapestry Registration

Early Bird- \$35; postmarked by 12/1/13

Regular- \$40; postmarked by 2/1/14

Late- \$45; postmarked after 2/1/14

One Day- \$25

Mail registration form to: Margaret Agee
810 Shadow Creek
Camden, AL 36726

Make check payable to: **AWF UMW**

Additional information:

margaret_agee@yahoo.com 334-682-5579

Jean Creswell jean@pinebelt.net 334-385-2521



Tapestry 2014

Weaving Life's Threads through Unity



February 21-22, 2014

Demopolis, Alabama

Demopolis District United Methodist Women invite you to the 7th Annual Tapestry Event. We will share together in times of worship, learning, and fellowship. We look forward to celebrating our unique gifts as we focus on our life's threads woven together in unity and love.

FEBRUARY 21-22, 2014

DEMOPOLIS FIRST UNITED METHODIST CHURCH
200 EAST DECATUR STREET, DEMOPOLIS, ALABAMA

Sponsored by AWFC United Methodist Women

HOTEL INFORMATION

Be sure to ask for the UMW block to receive a special rate; rate expires one week prior to the event.

- Days Inn- (334) 289-2500, 1005 Hwy 80 E
- Comfort Inn- (334) 289-9595, 943 Hwy 80 W
- Best Western- (334) 289-2611, 662 Hwy 80 W

Chances for door prizes are based on timeliness of registration:

5 chances if full registration & postmarked by 12/1/13

3 chances if full registration & postmarked by 2/1/14

1 chance after 2/1/14 and if one day price

Focus Groups

Pass the Plate: Preserving Family Food Traditions Learn how to create a cookbook preserving family recipes, customs, pictures and scripture	Discover Your Roots: Digging into Genealogy Create a family tree using various resources
Make a Joyful Noise: How to Make Palm Pipes Construct a unique, fun instrument for children and adults	Become the True You: Transforming Mind & Body** Learn to use yoga practices and biblical guides for a healthier life
Come to the Garden: Designing and Arranging with Nature** Learn to design and arrange using greenery, flowers, and other items from nature	Practice Ancient Prayer: Making and Using Prayer Beads** Rediscover this ancient discipline of personal meditation and prayer
Reach for Help: Hospice is Here Learn about hospice and how it can help you plan for a family member's care through sickness	Become Involved: Finding Mission Opportunities through Networking** Discover ways to utilize resources and become involved in missions
Stop the Scams: Become Aware of Telephone and Internet Predators** Learn from an authority about computer and home safety	**Denotes 1 flight of stairs to class. Each attendee may attend two focus groups. Select four options and rank them in order of preference on registration form.

Tapestry 2014 Registration Form

Name _____

Address _____

Phone# _____ Email _____

Your Church _____ Your District _____ Non-UMW _____

Focus Groups– Mark your first 4 choices (1,2,3,4)

_____ Pass the Plate _____ Discover your Roots _____ Make a Joyful Noise _____ Become the True You _____
 _____ Come to the Garden _____ Practice Ancient Prayer _____ Reach for Help _____ Become Involved _____ Stop the Scams

Registration Type: (check enclosed) () Early Bird \$35 by 12/1/13 () Regular \$40 by 2/1/14 () Late \$45 after 2/1/14

One Day Only: () Friday \$25 () Saturday \$25